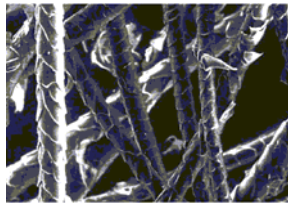


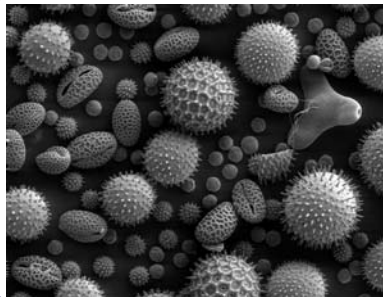
PUBLIC HEALTH FACULTY COLLOQUIUM SERIES

PRESENTS: DR. TOMAS TAMULIS

“CHILDHOOD RURAL ASTHMA PROJECT 2009-2011: PROGRAM MONITORING AND EVALUATION ”



Shown here is a close-up of cats fur and it's dander



In collaboration between the Hawaii State Asthma Control Program and Waianae Coast Comprehensive Health Center (WCCHC), the CDC-funded program will attempt to identify indoor environment factors that contribute to high asthma prevalence rates for local indigenous underserved and low-income communities, and will deliver the home-based environmental intervention in order to reduce or eliminate environmental exposure to these factors. The project will also provide a comprehensive training program for both asthma patients on known environmental triggers of asthma and self-management of disease, and asthma primary care providers to improve patient care, disease diagnosis, and patient referral services.

DATE: THUR., OCT. 29, 2009

TIME: 12:00-1:00PM

LOCATION: UH-MANOA, BIOMED D207

FOR MORE INFORMATION CONTACT DR. KATIE HEINRICH: [KATIEMH@HAWAII.EDU](mailto:katiemh@hawaii.edu)